

363



Kugelabsperrhähne außen/innen mit Überwurfmutter für Wasserzähler

Male/female shut-off ball valves with swivel nut for water meters

PN25

MADE IN ITALY



NICHT VERNICKELT
NOT NICKEL-PLATED

TRINKWASSER
DRINKING WATER

VOLLER DURCHGANG
FULL BORE

Absperrventil (ON-OFF) für Wasserzähler (geeignet für den Trinkwasserverbrauch nach den neuesten europäischen Vorschriften).

Shut-off valve (ON-OFF) for water meters (suitable for drinking water consumption according to recent European regulations).

Betriebsdruck: 25 bar

Betriebstemperatur: -20°C +130°C (kein Frost)

Zylindrische Gewinde nach ISO 228-1

Spindeldichtung:

- 1/2" - 3/4" von innen montierte Spindel mit 2 O-Ringen aus EPDM PEROX;

- 1"x1" von innen montierte Spindel mit 2 O-Ringen aus EPDM PEROX;

- 1"x1" 1/4 von innen montierte Spindel mit 2 O-Ringen aus EPDM PEROX;

Kugeldichtung mit 2 PTFE-Kugeldichtungen

Voller Durchgang

Working pressure: 25 bar

Working temperature: -20°C +130°C (no frost)

Cylindrical threads according to ISO 228-1

Seal on the stem:

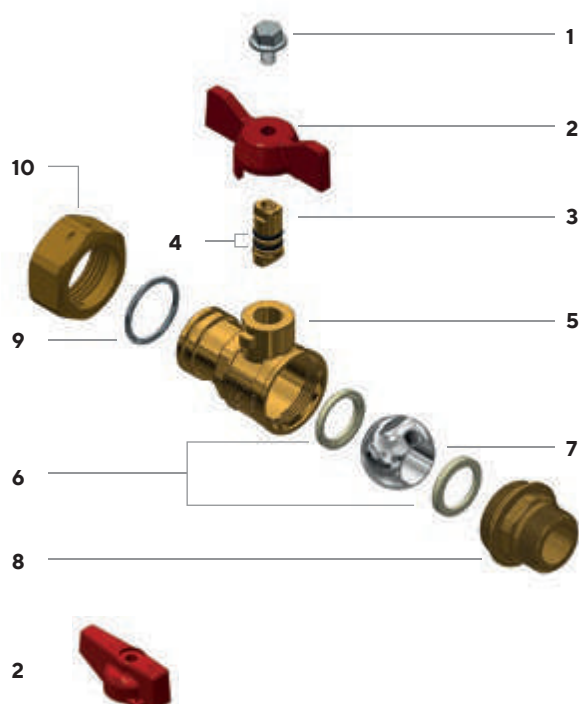
- 1/2" - 3/4" stem assembled from inside with 2 EPDM PEROX OR;

- 1"x1" stem assembled from inside with 2 EPDM PEROX OR;

- 1"x1" 1/4 stem assembled from inside with 2 EPDM PEROX OR.

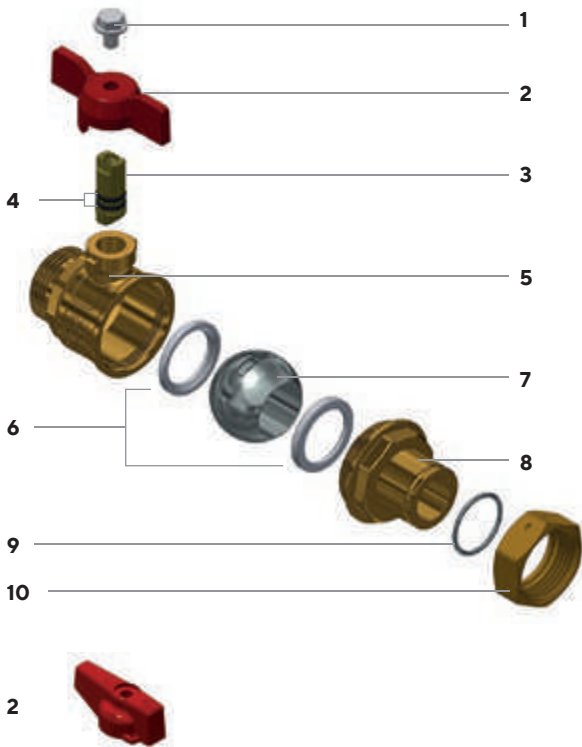
Seal on the ball with 2 PTFE gaskets

Full bore



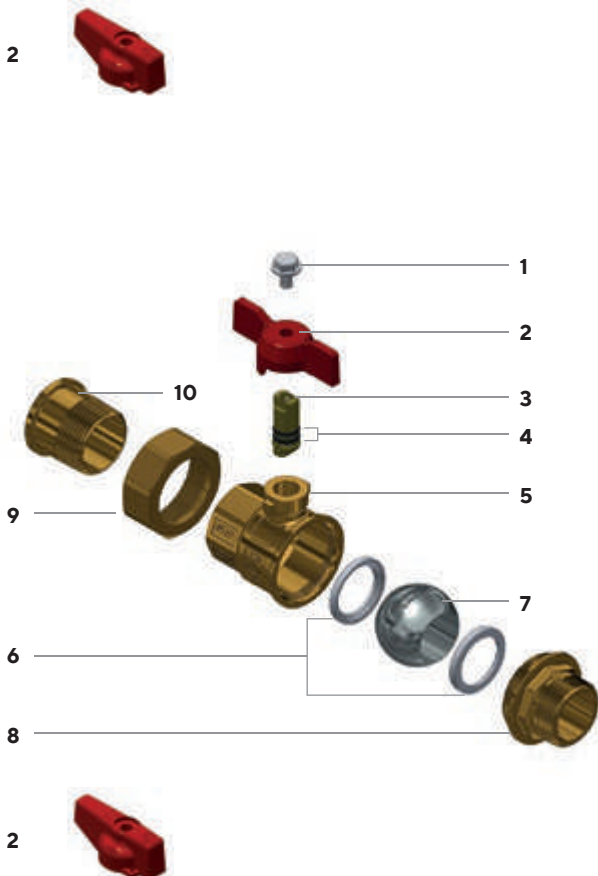
- 1 Schraube aus Edelstahl AISI 430
- 2 Mit T-Griff oder Aluminium-Drehknopf
- 3 Spindel aus CW614N EN 12164
- 4 O-Ring aus EPDM PEROX
- 5 Ventilgehäuse aus CW617N UNI EN 12165
- 6 PTFE-Kugeldichtung
- 7 Kugel aus CW617N verchromt
- 8 Muffe aus CW617N EN 12165
- 9 Elastischer Sicherungsring aus Stahl
- 10 Mutter aus CW617N UNI EN 12165

- 1 AISI 430 steel screw
- 2 With aluminium "T" handle or aluminium knob
- 3 CW614N UNI EN 12164 stem
- 4 EPDM PEROX O-ring
- 5 CW617N UNI EN 12165 body valve
- 6 PTFE gasket
- 7 CW617N chrome plated ball
- 8 CW617N EN 12165 end adaptor
- 9 Steel elastic ring
- 10 CW617N UNI EN 12165 nut



- 1 Schraube aus Edelstahl AISI 430
- 2 Mit T-Griff oder Aluminium-Drehknopf
- 3 Spindel aus CW614N EN 12164
- 4 O-Ring aus EPDM PEROX
- 5 Ventilgehäuse aus CW617N UNI EN 12165
- 6 PTFE-Kugeldichtung
- 7 Kugel aus CW617N verchromt
- 8 Muffe aus CW617N EN 12165
- 9 Elastischer Sicherungsring aus Stahl
- 10 Mutter aus CW617N UNI EN 12165

- 1 AISI 430 steel screw
- 2 With aluminium "T" handle or aluminium knob
- 3 CW614N UNI EN 12164 stem
- 4 O-Ring aus EPDM PEROX
- 5 CW617N UNI EN 12165 body valve
- 6 PTFE gasket
- 7 CW617N chrome plated ball
- 8 CW617N EN 12165 end adaptor
- 9 Steel elastic ring
- 10 CW617N UNI EN 12165 nut



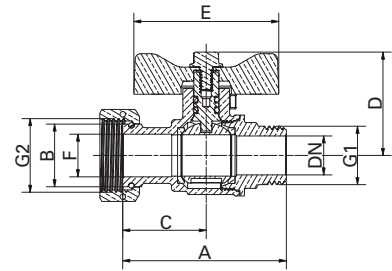
- 1 Schraube aus Edelstahl AISI 430
- 2 Mit T-Griff oder Aluminium-Drehknopf
- 3 Spindel aus CW614N EN 12164
- 4 O-Ring aus EPDM PEROX
- 5 Ventilgehäuse aus CW617N UNI EN 12165
- 6 PTFE-Kugeldichtung
- 7 Kugel aus CW617N EN 12165 verchromt
- 8 Muffe aus CW617N EN 12165
- 9 Mutter aus CW617N UNI EN 12165
- 10 Tülle aus CW617N EN 12165

- 1 AISI 430 steel screw
- 2 With aluminium "T" handle or aluminium knob
- 3 CW614N UNI EN 12164 stem
- 4 O-Ring aus EPDM PEROX
- 5 CW617N UNI EN 12165 body valve
- 6 PTFE gasket
- 7 CW617N chrome plated ball
- 8 CW617N EN 12165 end adaptor
- 9 CW617N UNI EN 12165 nut
- 10 CW617N UNI EN 12165 tail



Mit Aluminium-T-Griff
With aluminium "T" handle

TRINKWASSER
DRINKING WATER

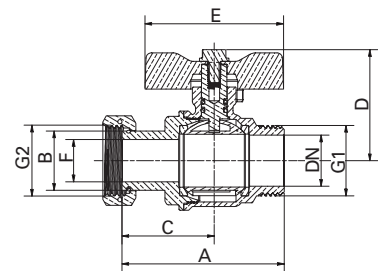


Anschlüsse Connections		Produktcode Product code		DN	A ±1 mm	B mm	C mm	D mm	E mm	F mm	VE klein/groß Pack. num. pieces
G1	G2										
1/2"	1/2"	363D1/2J6R1/2	363D1/2J6B1/2	15	58,5	16,2	29,5	37	52	10	10/120
1/2"	3/4"	363D1/2J6R3/4	363D1/2J6B3/4	15	58,5	22,5	30	37	52	15,3	10/120
3/4"	3/4"	363E3/4J6R3/4	363E3/4J6B3/4	15	59,5	22,5	30	37	52	15,3	10/120



Mit Aluminium-T-Griff
With aluminium "T" handle

TRINKWASSER
DRINKING WATER

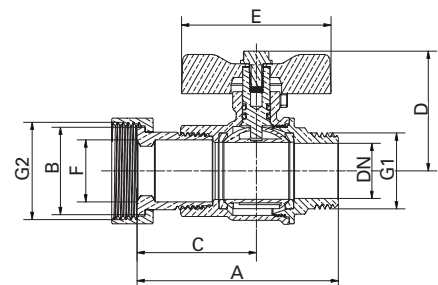


Anschlüsse Connections		Produktcode Product code		DN	A ±1 mm	B mm	C mm	D mm	E mm	F mm	VE klein/groß Pack. num. pieces
G1	G2										
1"	1"	363F001J6R1	363F001J6B1	25	76	28	43,3	52	65	19,8	10/120



Mit Aluminium-T-Griff
With aluminium "T" handle

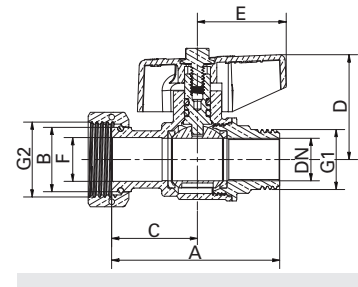
TRINKWASSER
DRINKING WATER





Anschlüsse Connections		Produktcode Product code		DN	A ±1 mm	B mm	C mm	D mm	E mm	F mm	VE klein/groß Pack. num. pieces
G1	G2										
1"	1" 1/4	363F01J6R11/4	363F01J6R11/4	25	87,5	38	52	52	65	25,5	3/36



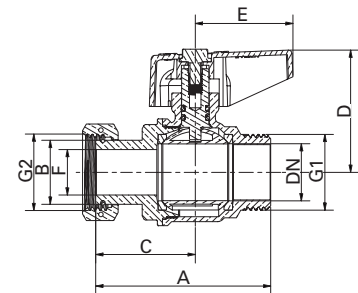
Mit Drehknopf aus Aluminium
With aluminium knob





Anschlüsse Connections		Produktcode Product code		DN	A ±1 mm	B mm	C mm	D mm	E mm	F mm	VE klein/groß Pack. num. pieces
G1	G2										
1/2"	1/2"	363D1/2J2R1/2	363D1/2J2B1/2	15	58,5	16,2	29,5	36,5	31,5	10	10/120
1/2"	3/4"	363D1/2J2R3/4	363D1/2J2B3/4	15	58,5	22,5	30	36,5	31,5	15,3	10/120
3/4"	3/4"	363E3/4J2R3/4	363E3/4J2B3/4	15	59,5	22,5	30	36,5	31,5	15,3	10/120



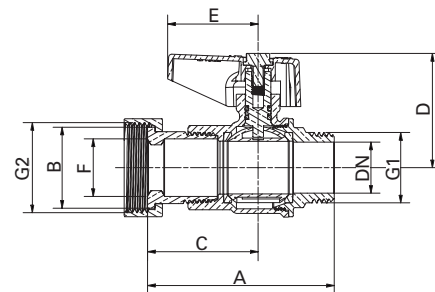
Mit Drehknopf aus Aluminium
With aluminium knob





Anschlüsse Connections		Produktcode Product code		DN	A ±1 mm	B mm	C mm	D mm	E mm	F mm	VE klein/groß Pack. num. pieces
G1	G2										
1"	1"	363F001J2R1	363F001J2B1	25	76	28	43,3	53,5	42,5	19,8	10/120



Mit Drehknopf aus Aluminium
With aluminium knob



Anschlüsse Connections		Produktcode Product code		DN	A ±1 mm	B mm	C mm	D mm	E mm	F mm	VE klein/groß Pack. num. pieces
G1	G2										
1"	1" 1/4	363F01J2R11/4	363F01J2B11/4	25	87,5	38	52	53,5	42,5	25,5	3/36